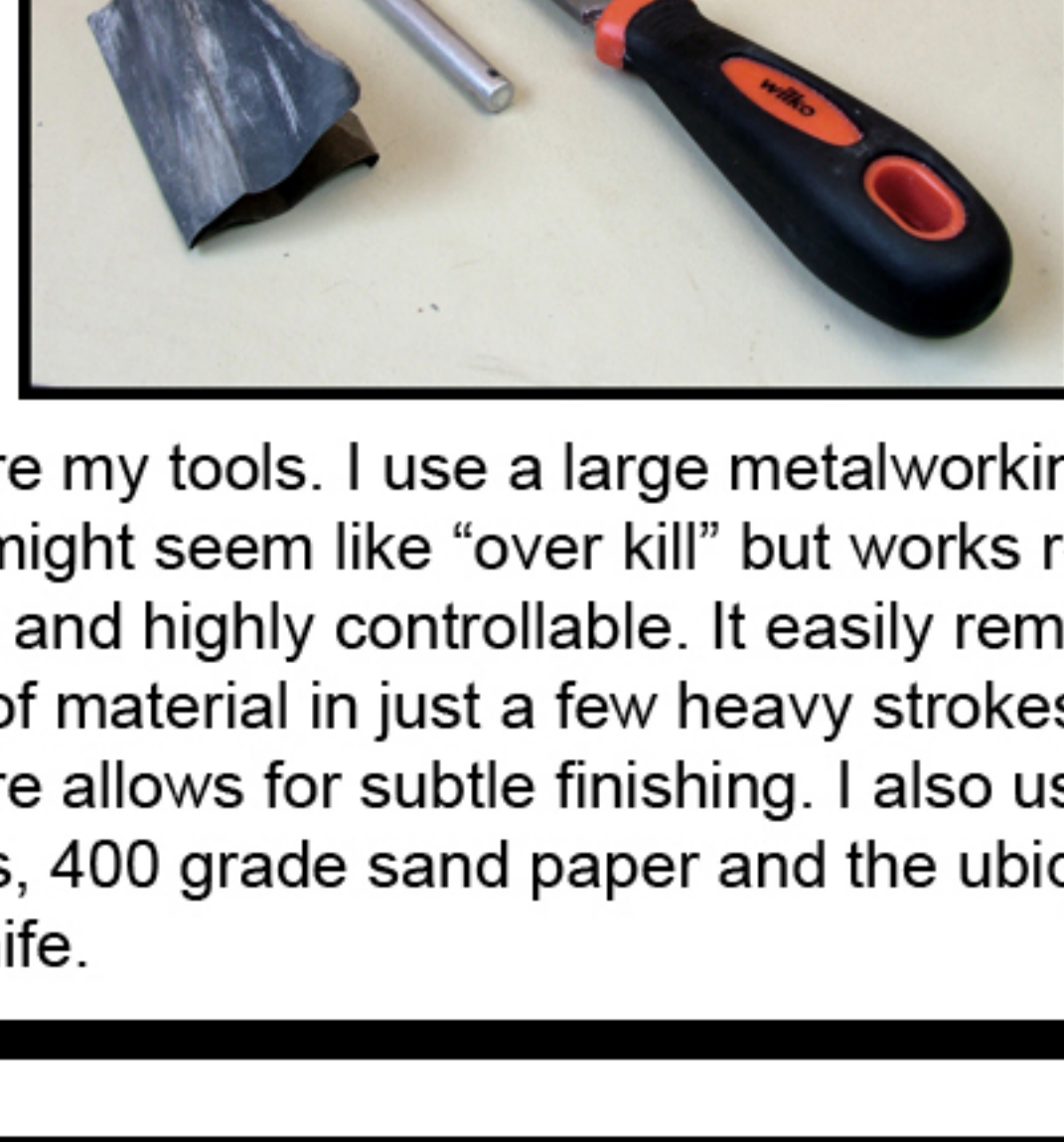


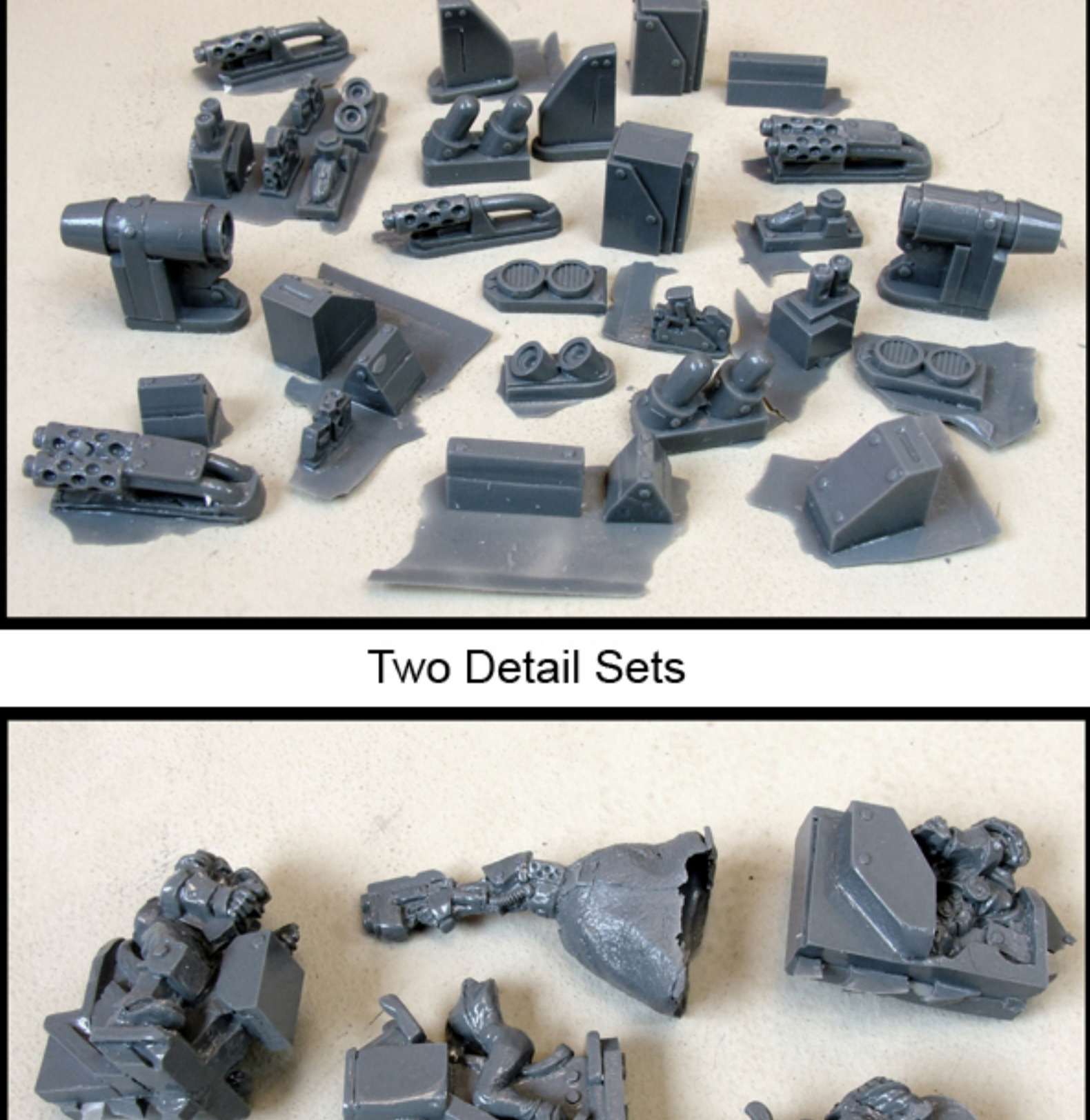
ASSEMBLY GUIDE

Ramshackle Games models are great fun and easy to assemble. The models are made from polyester resin. When working with this kind of resin, its worth keeping in mind the following tips and advice for the best results.



Here are my tools. I use a large metalworking file, which might seem like "over kill" but works really well. It is flat and highly controllable. It easily removes plenty of material in just a few heavy strokes, but light pressure allows for subtle finishing. I also use clippers, 400 grade sand paper and the ubiquitous craft knife.

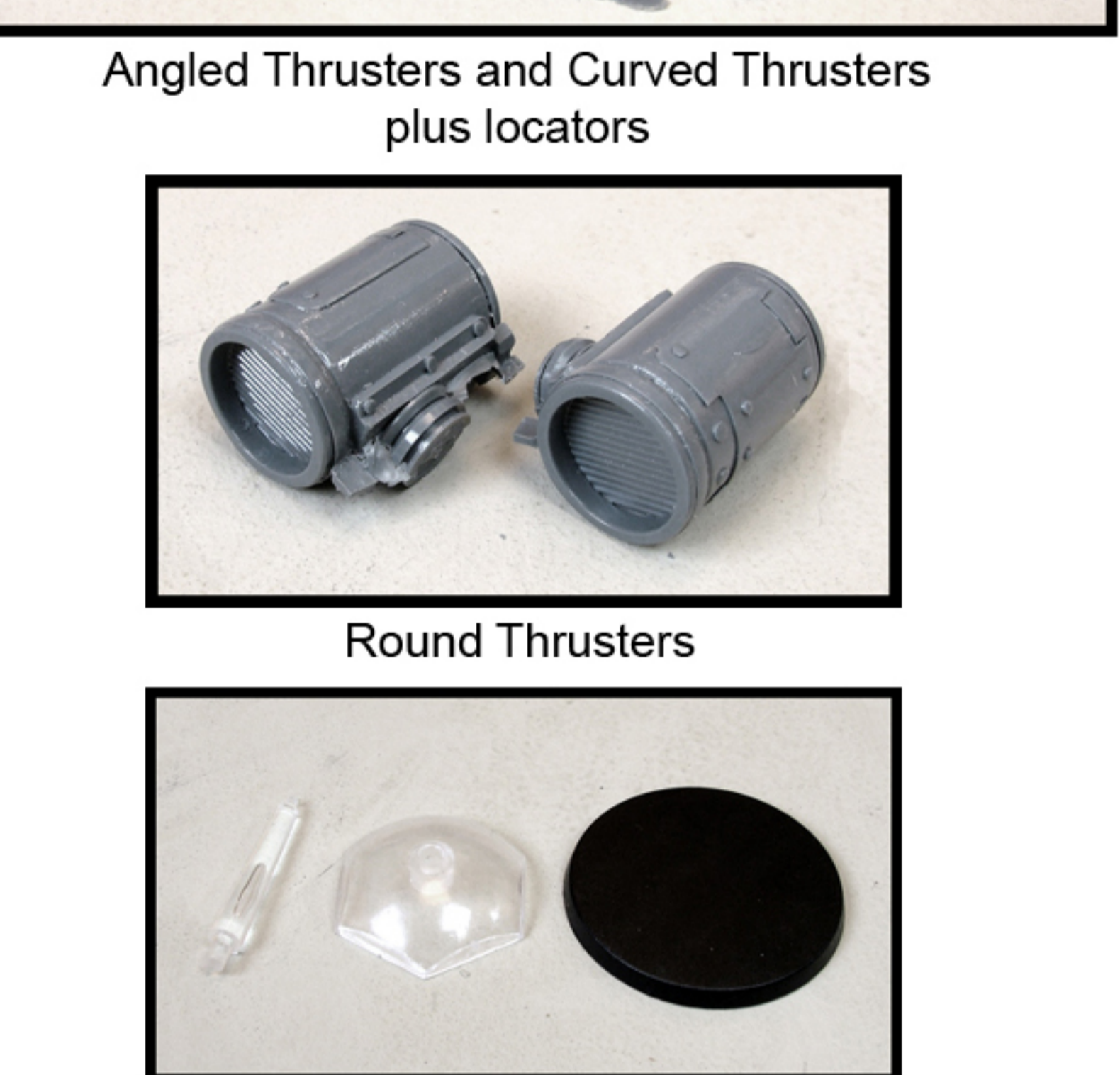
These are the parts from The Full Set Reward. The parts are shown more or less as they will be supplied. Please note that the way the moulds are made that there are few mould lines which very little preparation is needed.



The Fronts



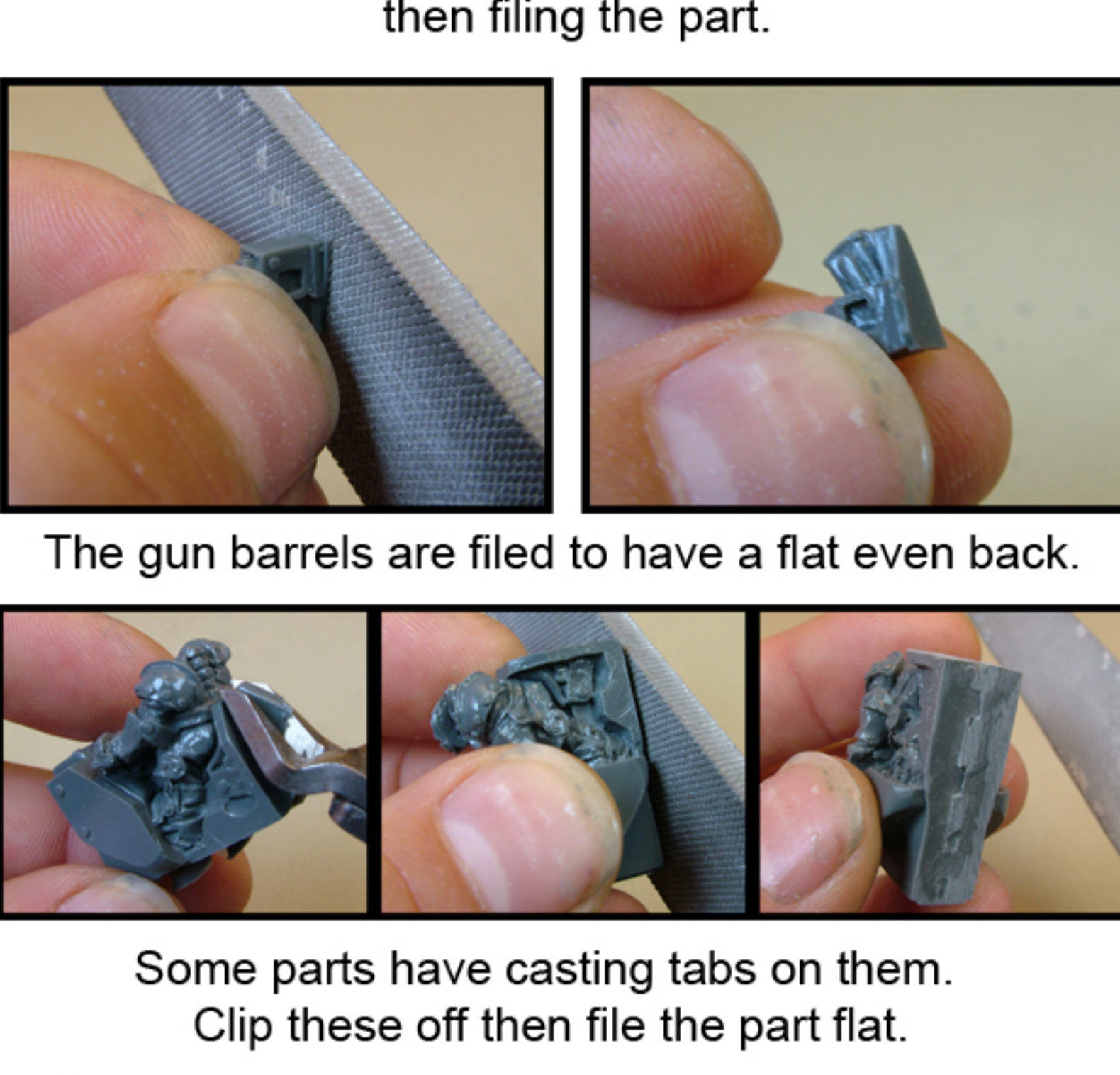
Two Detail Sets



The Riders



Stabilisers and Exhausts



Angled Thrusters and Curved Thrusters plus locators



Round Thrusters

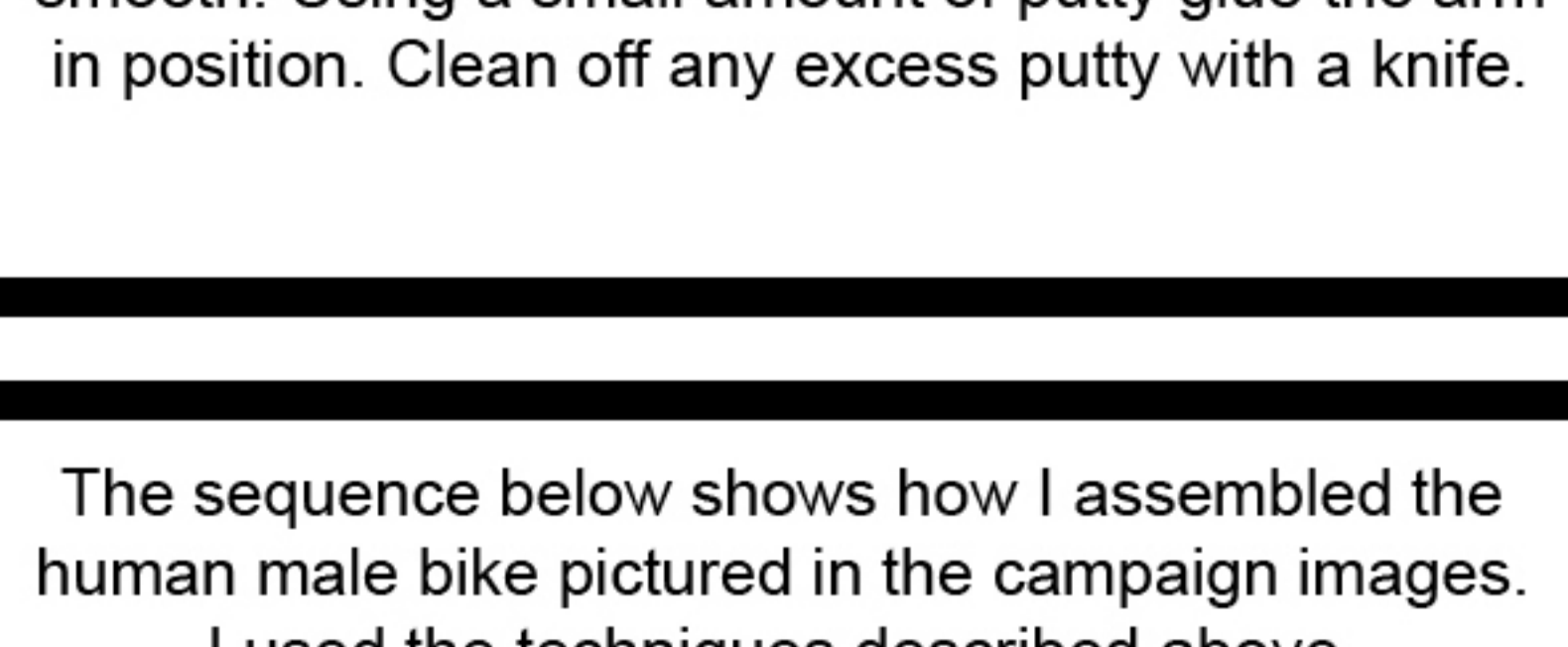


Bases

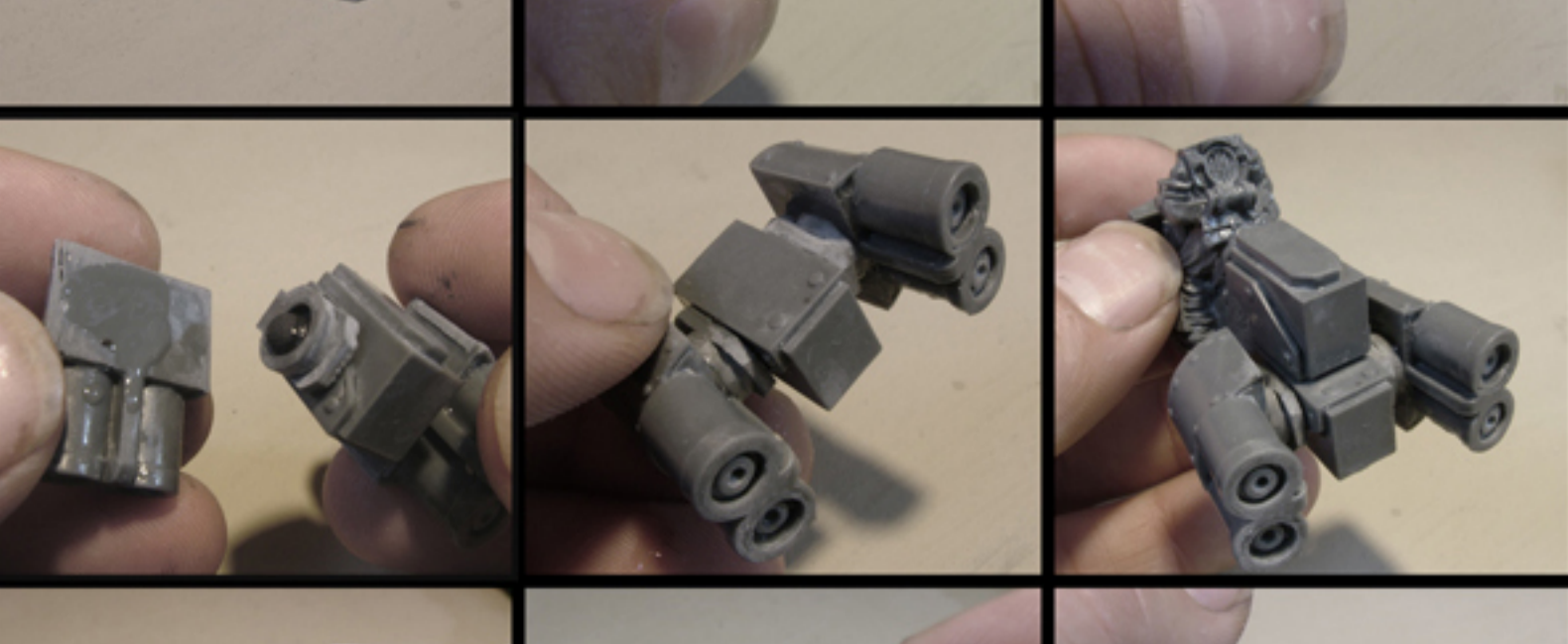
To prepare the parts for assembly some filling will be necessary. This is easy and wont take very long. Resin dust can be harmful. Please wear a dust mask if using power tools.



The deetail set contains many great parts. I usually has some flash material attached. Carefully break the bits apart with your fingers.



The gun barrels are filed to have a flat even back.



Some parts have casting tabs on them. Clip these off then file the part flat.



Once the parts are ready please wash them with detergent and water. Rinse them and allow to dry.

Super glue is the best adhesive for assembling the models. The final joint will be stronger than the resin itself.

Super glue dissolves the resin slightly, which means that setting times can be extended. This can be annoying. The best way to solve this problem is to use some putty to hold the parts while the glue sets. I use plasticine, which may sound odd but works really well. The glue adheres to it almost instantly, but as it is maleable allows repositioning. Other putties like Green Stuff work just as well.

Use only a small amount of putty and smother it with glue. The putty is just to hold the parts while the glue sets. Don't use too much putty or else the final joint may be weak.

The image above shows assembly of the female rider. Clip the arm then sand the casting tab smooth. Using a small amount of putty glue the arm in position. Clean off any excess putty with a knife.

The sequence below shows how I assembled the human male bike pictured in the campaign images. I used the techniques described above.

