

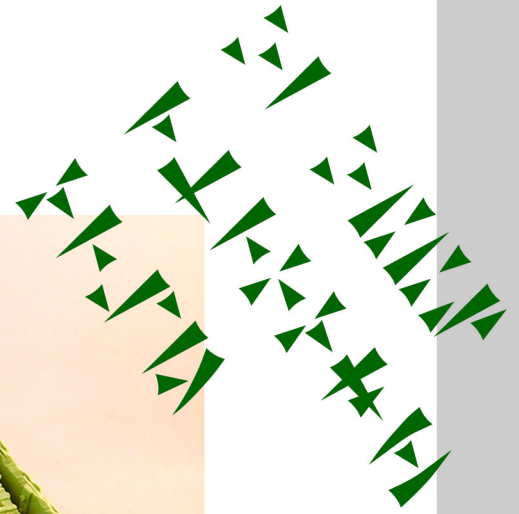
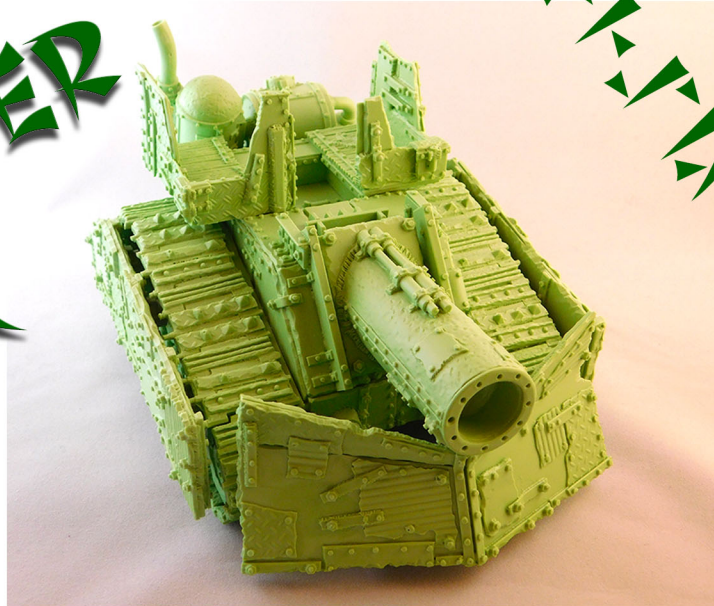


DA GREEN ONE

# DA GREEN ONE

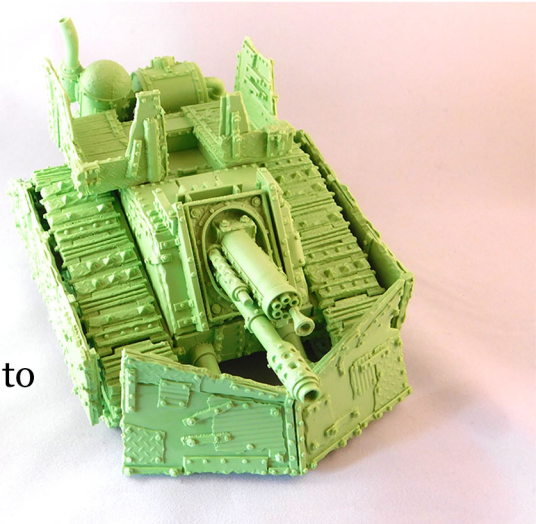
da-green-one.com

## DA DOOM BLASTER TANK



Welcome to the Doomblaster Tank  
The tank comes in two variants, the  
**Doom Smasha**, ( the one with the BIG  
kannon), and the  
**Doom Storm**, ( the one with lotsa luvly  
Gunz).

As always they are ready to build and mod to  
your mad Mek is content.  
Have Fun



First a big thanks for buying the Da Green Doom Blaster Tank Model.  
We hope that these building "suggestions" help you.  
As usual, any queries just drop me a line at D.G.O's at the contact page.  
We like to see what other folks have done with their models.  
So if you want to drop some pics in please do.  
But either way... Enjoy  
Best

**Da Green**





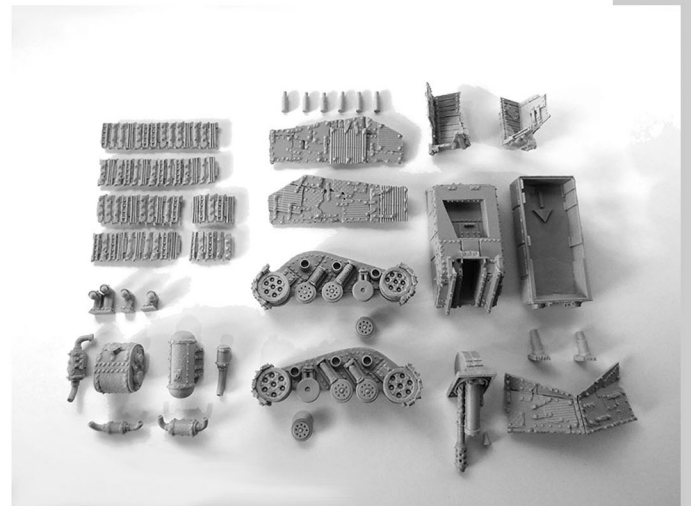
# DA GREEN ONE

da-green-one.com

DA GREEN ONE

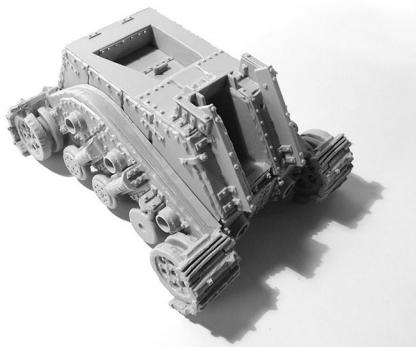
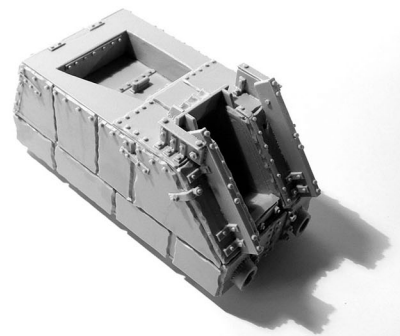
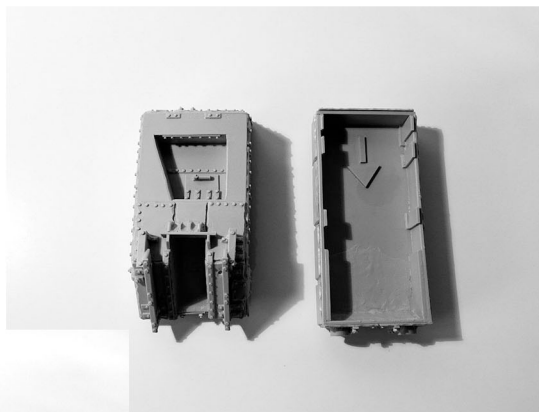


The only difference between the Storm and the Smashaare the kannon types. These can be purchased seperately in the store if you wanted to maganatise the model



As usual any cleaning and preperation, dry-fitting should be done before you assemble your model. Heavy Gel Super Glue with an accelerator is advised on any large resin models. Plan ahead for your build.

The Hull has been designed in two parts that clip together. After that slide and glue in the running gear sections onto the model







# DA GREEN ONE

da-green-one.com

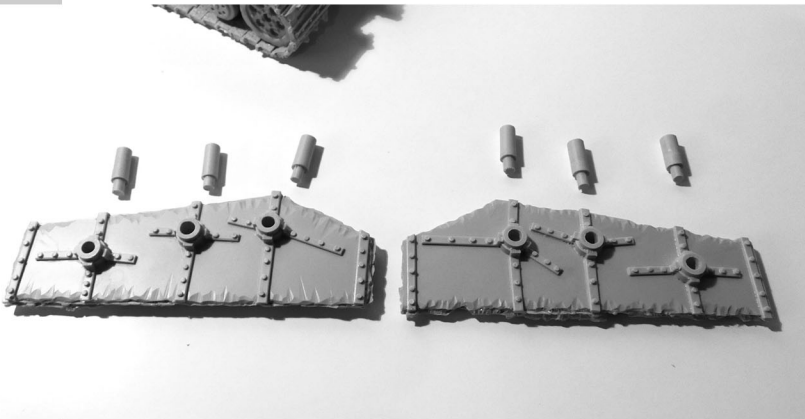
DA GREEN ONE



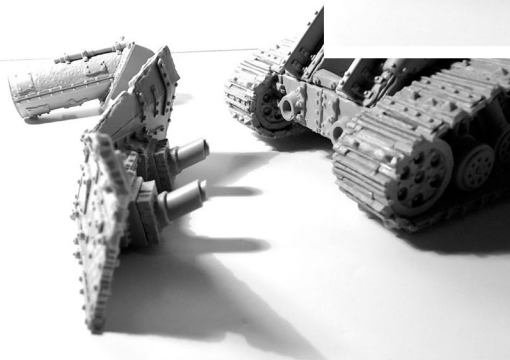
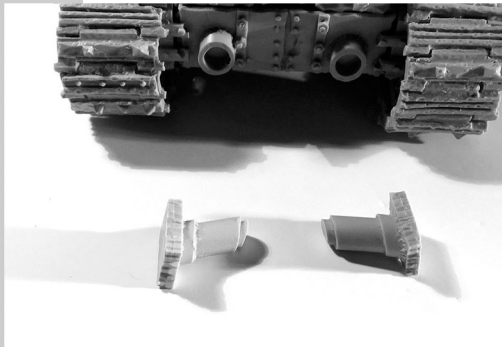
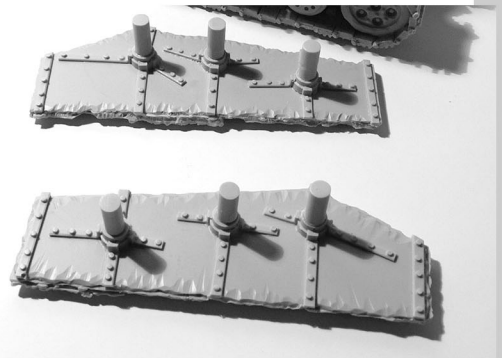
The tracks, pins and ablative armor...  
The tracks are in six parts.  
Just follow the curve of the running assembly.  
there are two running wheels that fit into the  
blank wheel.



You can build for open show or build the ablative panels in your choice.  
Keep the pins to maybe help you chose a wheel size for that.



Otherwise the ablative armor goes  
together easy enough just ensure  
the pins are upto the level with the  
hols on the plating for a good fit.



Buffer pins for the Plough next should be cut at the same angle  
as the wider portion to fit to the body

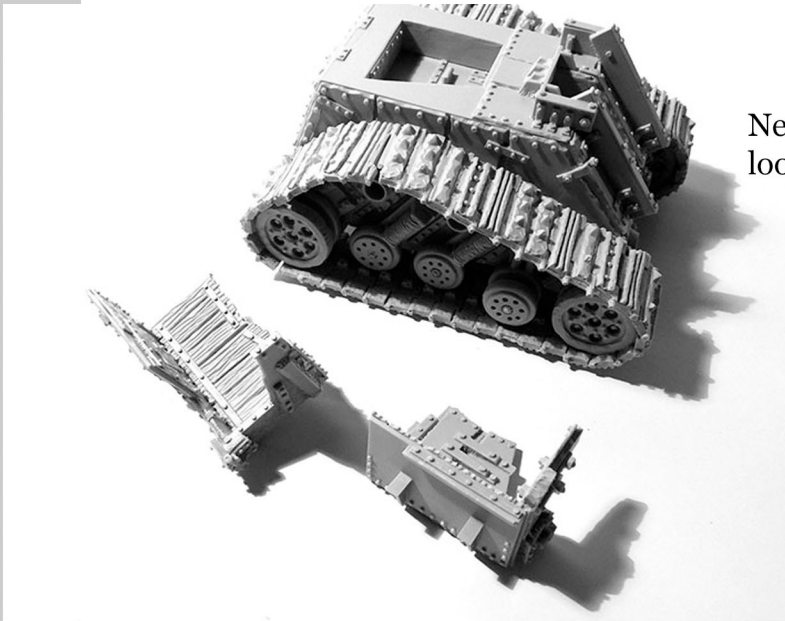




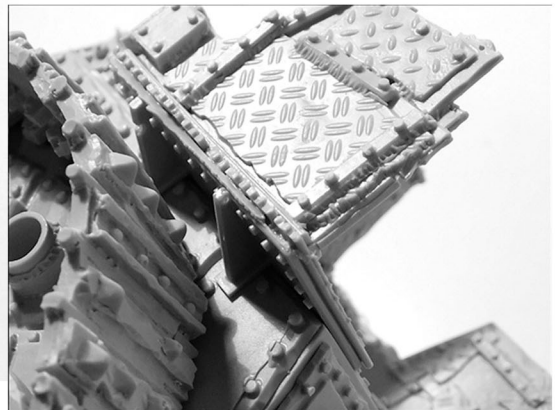
# DA GREEN ONE

da-green-one.com

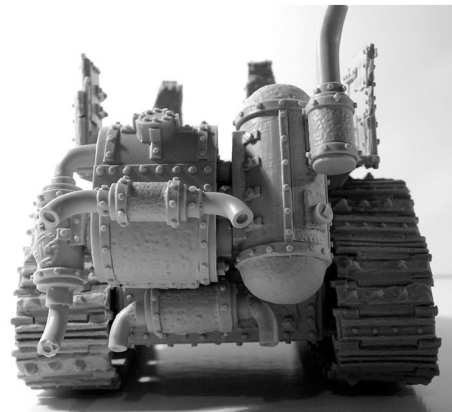
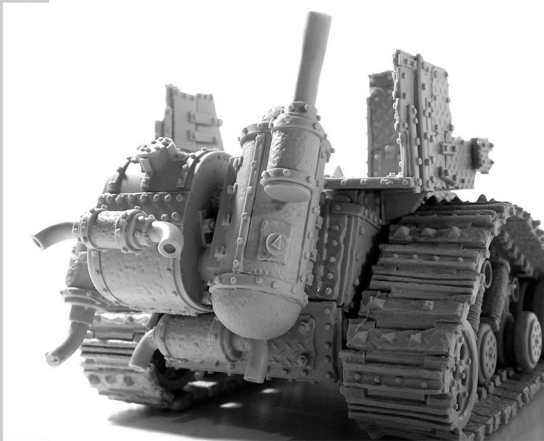
DA GREEN ONE



Next the Scaffolding. Dry fit them first and look at the images for direction



For the engine assembly follow the pics, or make up your own way



Now its time to add your weapons  
Wahahahaha!



4

