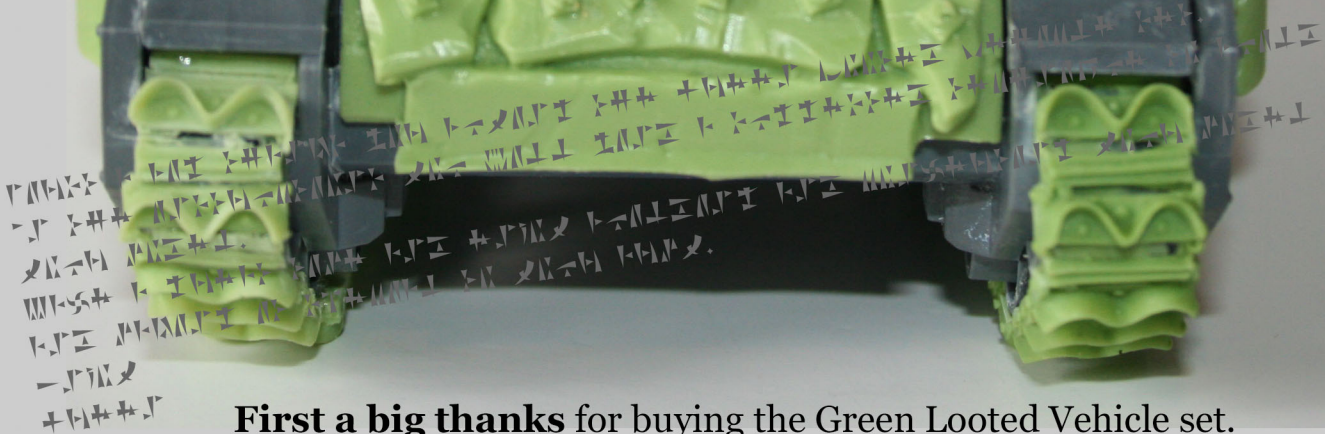




da-green-one.com

Da Green One

**GREEN LOOTED
VEHICLE SET**



First a big thanks for buying the Green Looted Vehicle set.
In the instructions you will find a suggested technique to build your model.
Have a great time and enjoy building and converting your model making it speshul to your army.
Enjoy
Green



da-green-one.com

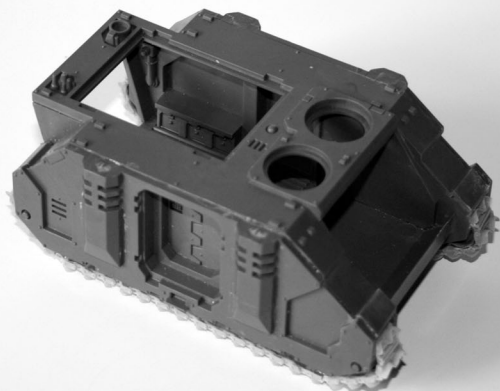
Da Green One

**GREEN LOOTED
VEHICLE SET**

THE MITRE
FAST SET



Here are some the suggested tools you may need during the build. You will also need the vehicle you intend to "LOOT" prepared. On this one I used Green Tracks that are compatible with the model to give it a more "ORKY" feel.

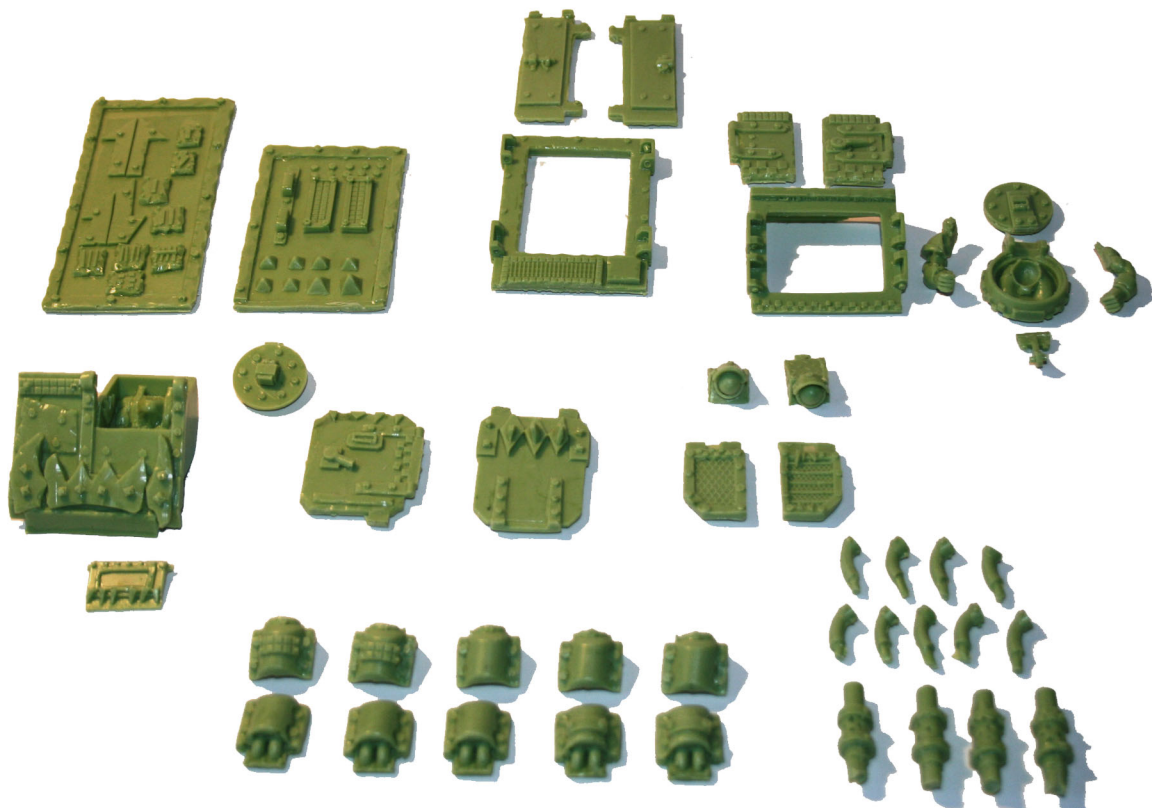
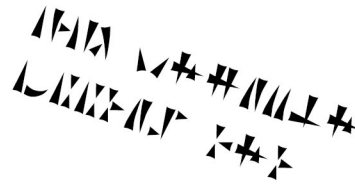


da-green-one.com

Da Green One

een-one.com

**GREEN LOOTED
VEHICLE SET**



Here are the parts and they make an awesome vehicle for your army.

Take the time to check what you have is the same as the pic. You may notice there are spares.

Thats on purpose.

You will need bits from your bits box too for torsos, heads and weapon load-outs.

If you ordered the “Roller of Squishy Deff” you will find it to the end of the instructions.



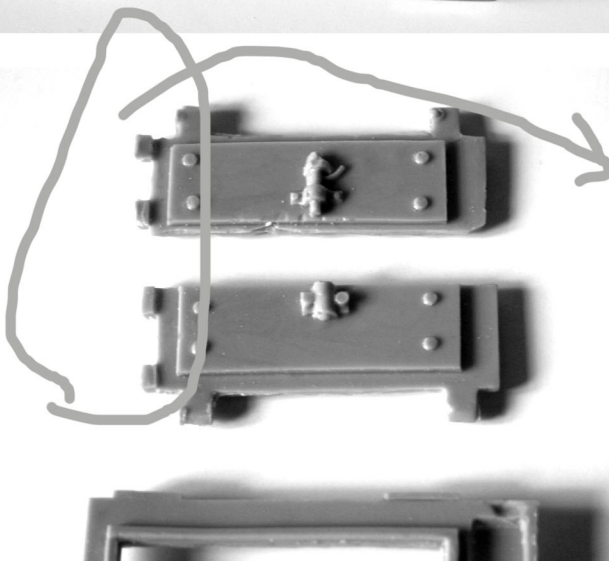
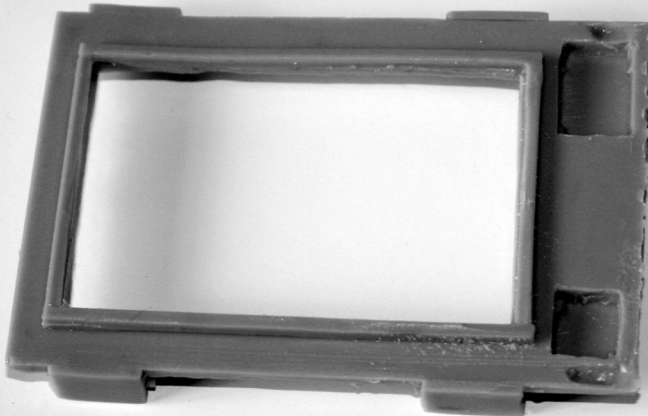
da-green-one.com

Da Green One

**GREEN LOOTED
VEHICLE SET**

THE GREEN ONE
VEHICLE SET

You will need to remove any raises in the chassis to allow placement of the 3rd party upgrades / downgrades. The hatch cover has indents to help with this



The parts will still have sprue on them so dont forget to remove them too

and then “dry test” before committing to glue.



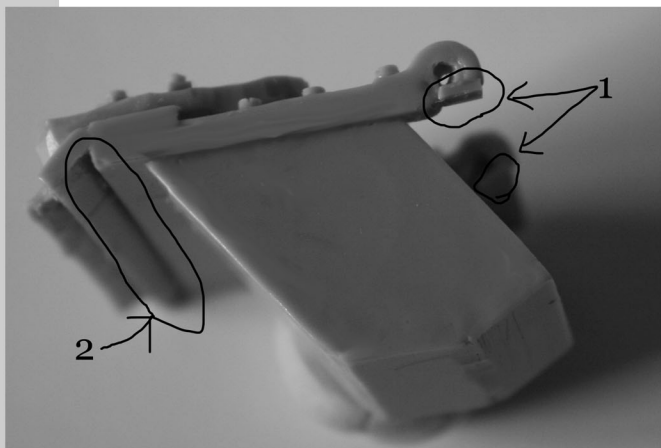
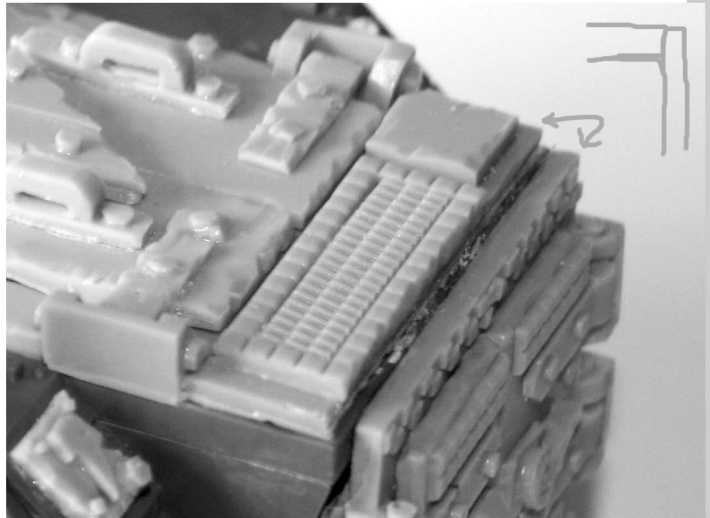
da-green-one.com

Da Green One

**GREEN LOOTED
VEHICLE SET**

THE GREEN ONE
LAWYER

I found that I started by Adding the Top Hatch and the back hatch first and aligning them. The underneath is notched to the plastic kit so dry fitting should show you the placement.



After this it was the front which slid In perfectly.
At the top are two areas of waste resin where the drivers window will sit. remove them but leave enough room for the window pins to sit.
See next page...



da-green-one.com

Da Green One

**GREEN LOOTED
VEHICLE SET**

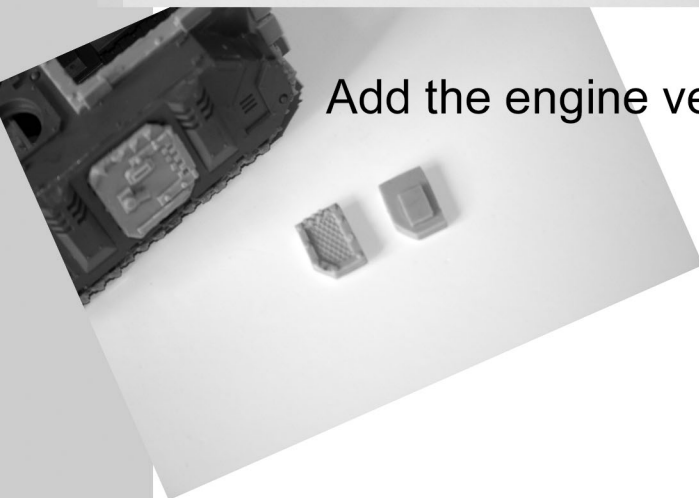
THE GREEN ONE
LAWYER



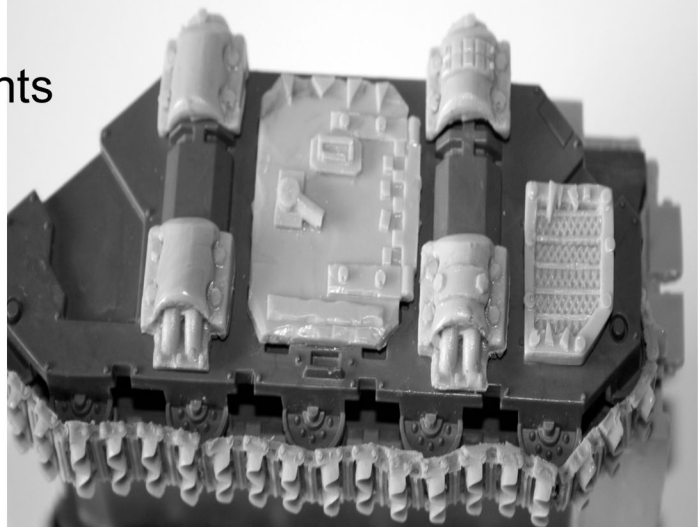
I added the head before putting the cab into the model. It might be better to paint the driver and inside of the cab before putting it in... Your choice.



Glue into this recess at the back



Add the engine vents



Add both top and bottom of the exhaust. Dry fit and finish as needed



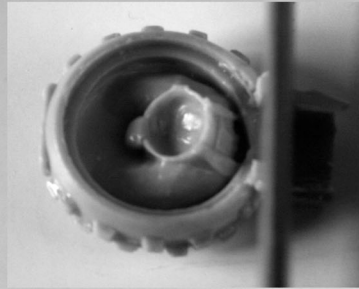
da-green-one.com

Da Green One

**GREEN LOOTED
VEHICLE SET**

THE GREEN ONE
LAWYER

For the Cupola, rather than cut it stright at the obvious point give yourself a mm or two.



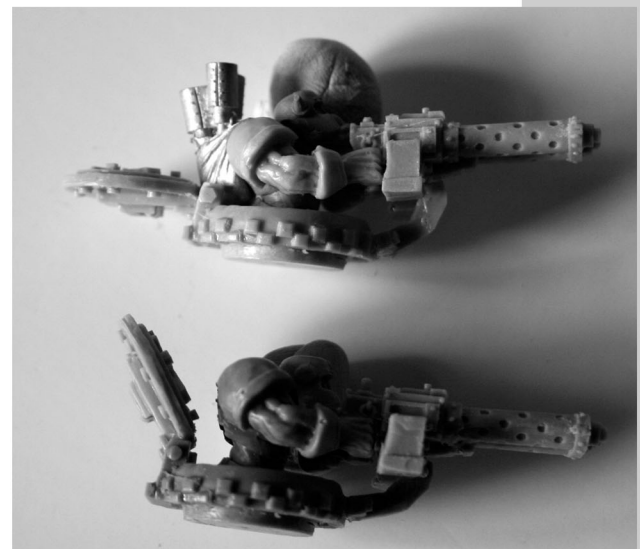
Fit the arms to the weapon and then the torso.

Finaly fixing the weapons mount "to fit"

The cupola hatch should be fitted to the situation.

See pic.

Note the backpack takes up room





da-green-one.com

Da Green One

**GREEN LOOTED
VEHICLE SET**

THE GREEN ONE
LAWYER

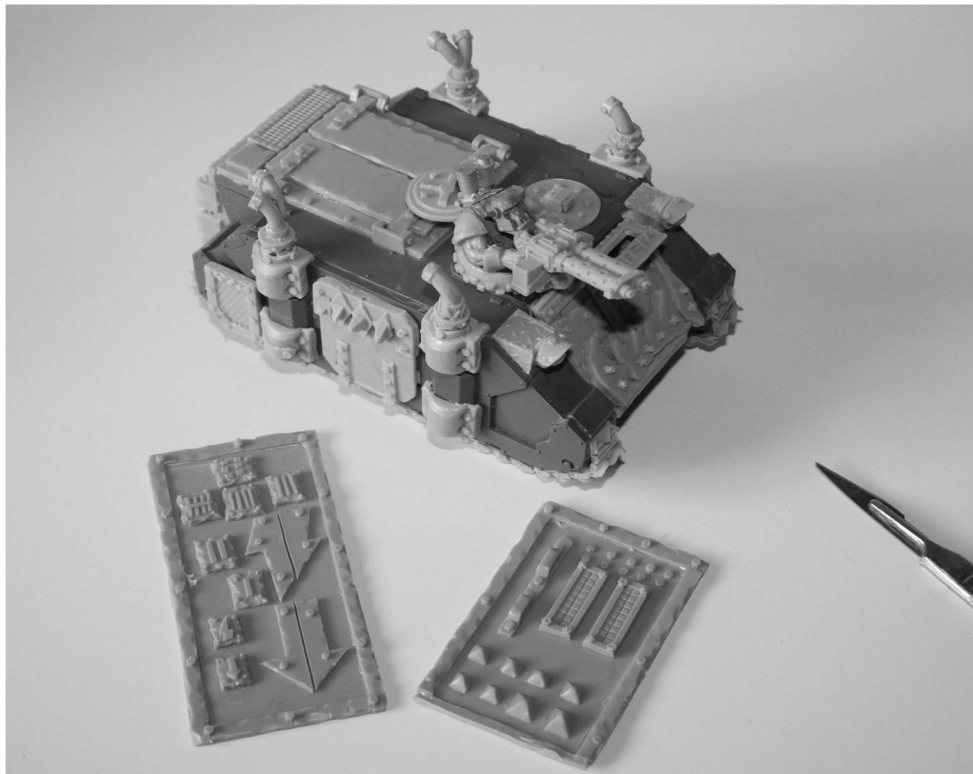
Almost done now just the exhaust tops and the detailing

The exhausts are a funny thing...

There are a whole bunch of pipes and bits for you to convert you never have to have the same looking model for a while. Look at the finished pics if it helps. Oh did you fit the lights?

Detailing

There are two cards of detailing for you to use too. From icons to numbers and shapes. You probably have tons in your bits box but its a start.





da-green-one.com

Da Green One

**GREEN LOOTED
VEHICLE SET**

THE GREEN
LOOTED SET



Pure GREEN

Done.
Thanks again and
get your model onto
the boards

But wait... did you order a "Rollerz of Squishy Deff" ?



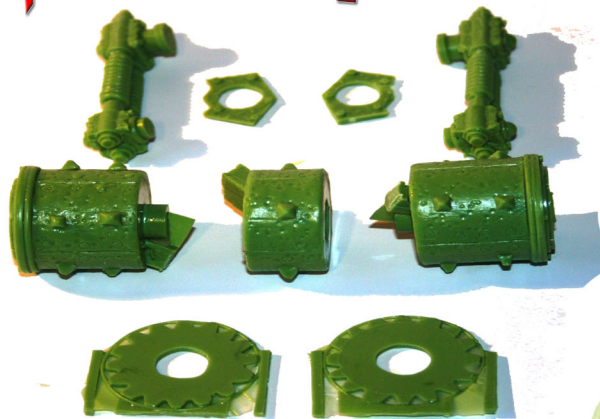
da-green-one.com

Da Green One

**GREEN LOOTED
VEHICLE SET**

THE GREEN ONE
LAWYER

Da Rollerz ov Squishy DEFF !



Da Rollerz come in nine parts
After preparing the parts
Dry fit the arm retainers onto
the hull and glue em in
Build the roller like the
pictures.
Dry fit it first check its
aligned.
The roller dosent need
glueing at the hull.
It will hold. Just in case you
want to remove it for points or
packing, or just Glue it its all good.



da-green-one.com

Da Green One

een-one.com

A large, green, distressed stamp with the words "GREEN LOOTED" on the top line and "VEHICLE SET" on the bottom line, slanted diagonally across the page. The stamp has a rough, ink-like texture. In the bottom right corner, there is a small, partially visible green object that looks like a toy car or a mechanical part.

